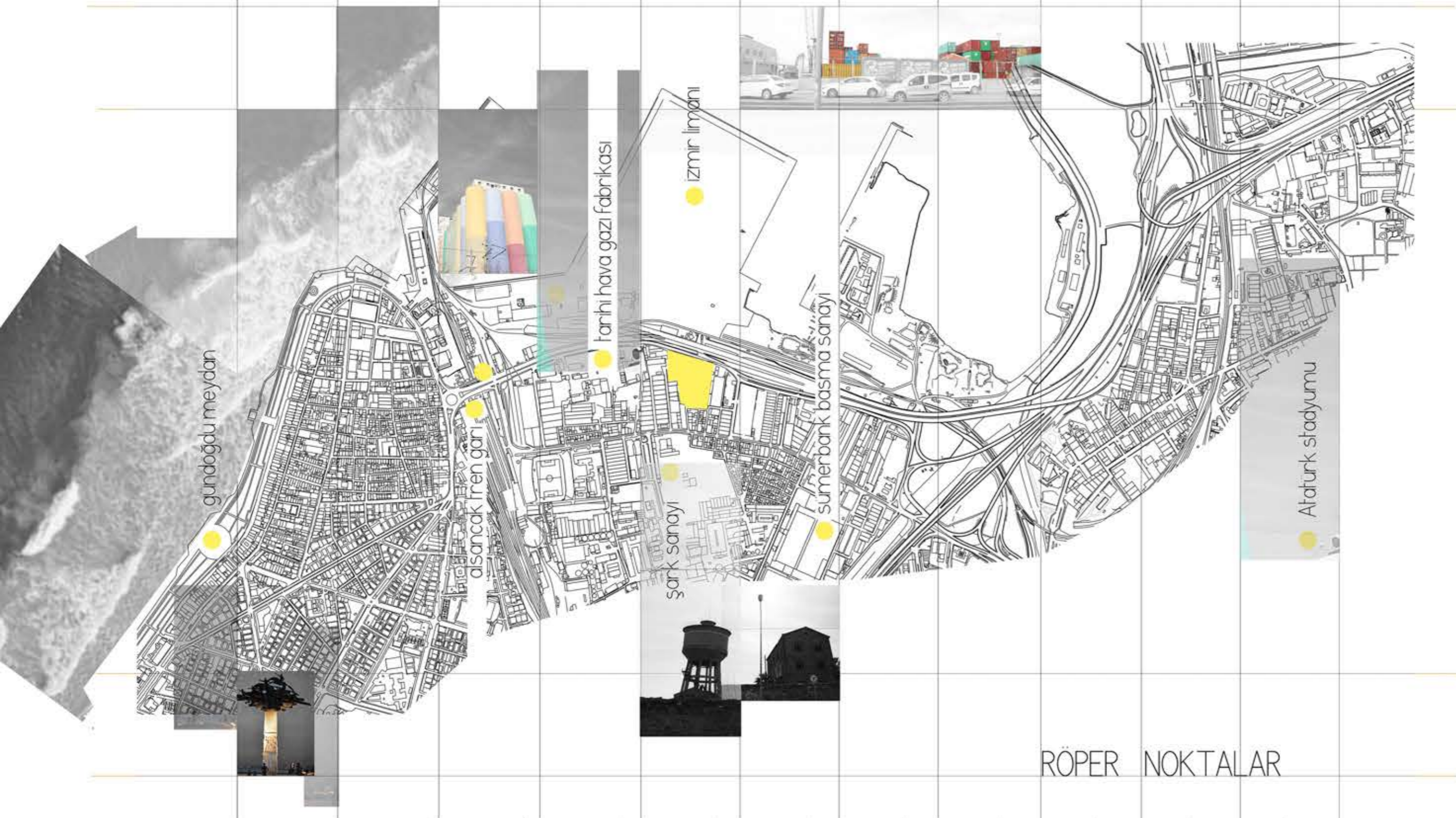
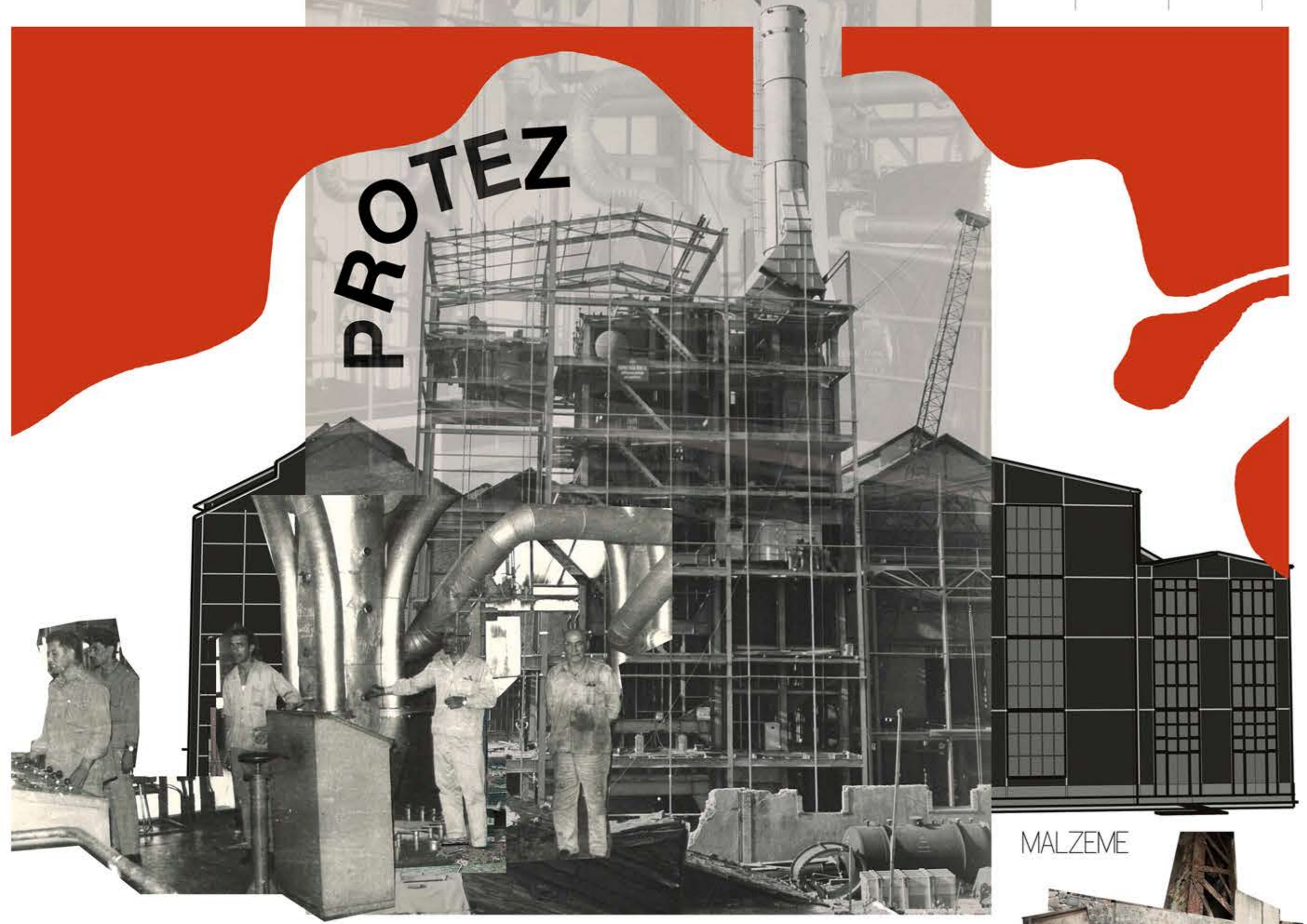
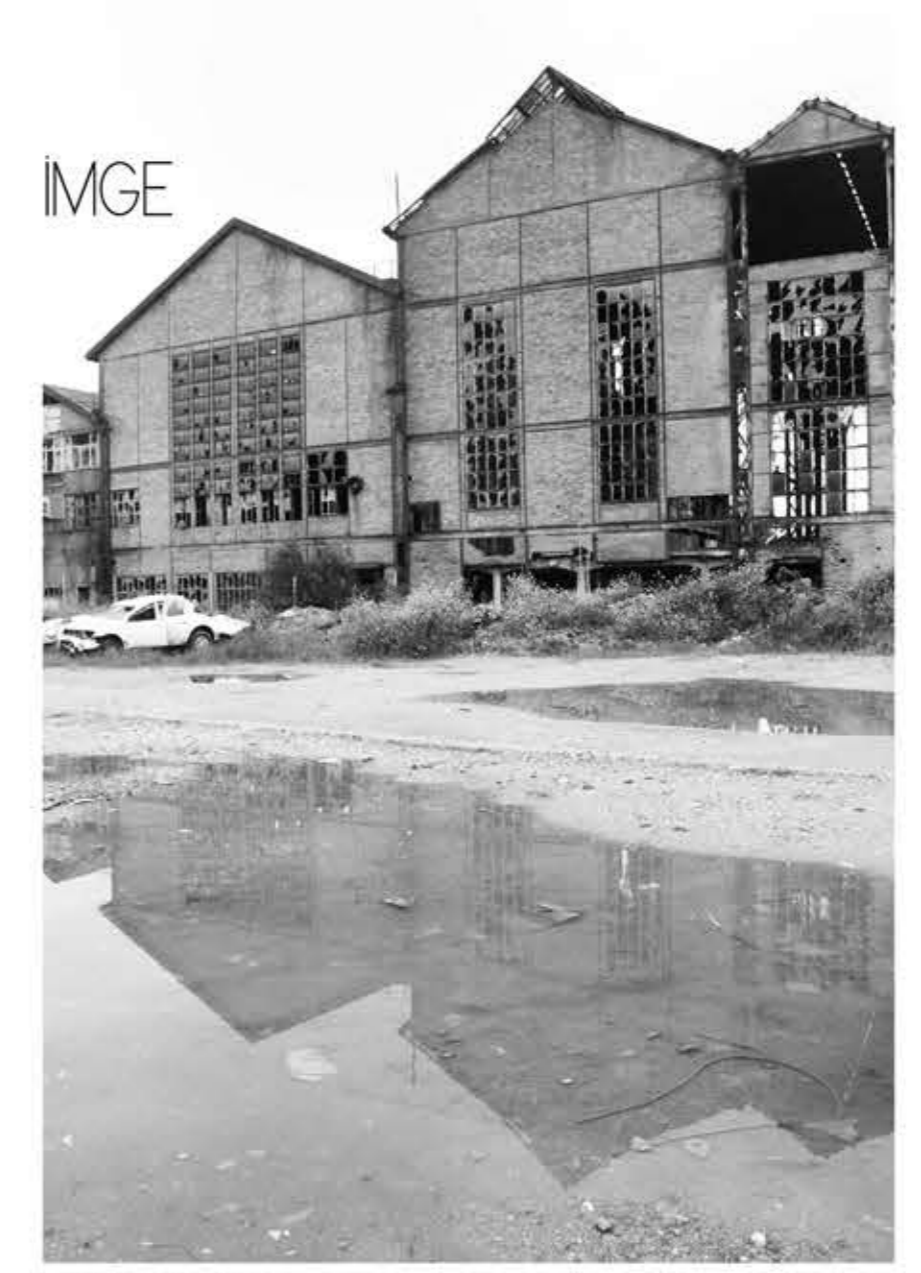


# DÖNÜŞÜM bulutu izmir elektrik fabrikası



RÖPER NOKTALAR



## PROJE RAPORU

Izmir elektrik fabrikası müphem yok olmaya yüz tutmuş durumda, keritte duvarlar ardından bir imge oluşturmakta. Santral binasının güney cephesinde bulunan santralin bir bölümü yıkılmış ve sadece struktur yığıntıları kalmış. Bu projede, yıkılan yapının ve zamanında bulunan bacanın formuna dikkat ederek PROTEZ bir struktur ve baca kurguladık. Yapının mevcut duvarları, taşıyıcı sistemi, kırık camları, yapının eski kullanım izleri, kullanıldığı zaman ile arasında güçlü bir bağ oluşturmakta, projenin konsept aşamasında bu izlere dokunmayan UÇUŞAN bir form kurguladık.

## MALZEME



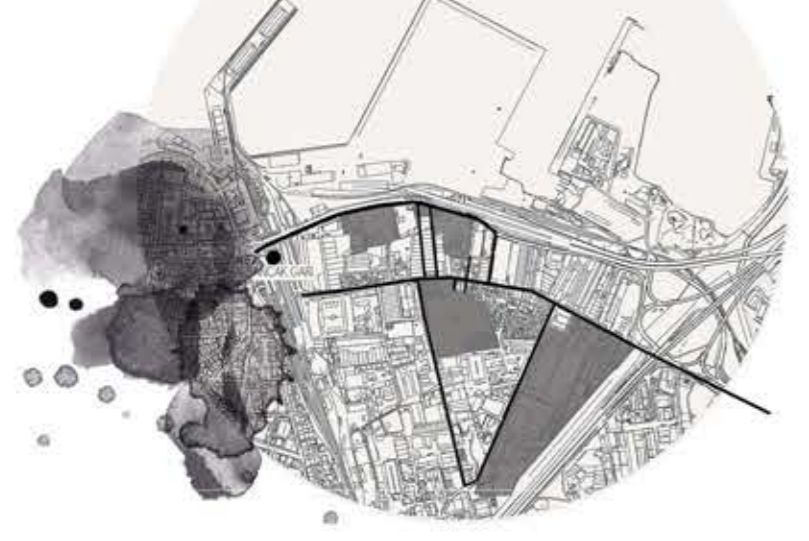
## KENTİN HAFIZASINDA KALMAK



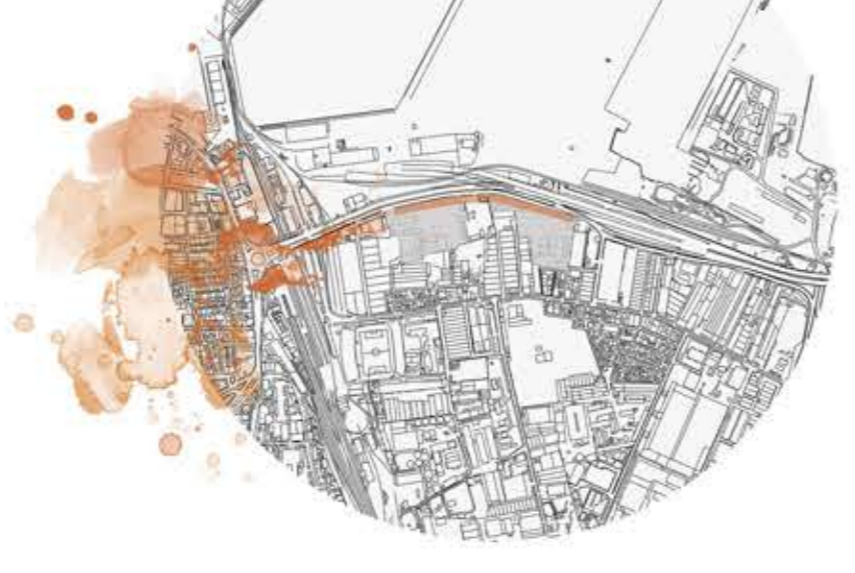
## FİZİKSEL İZLER



## ENDÜSTRİ MİRASİ ROTASI



## KAMUSAL BOŞLUK



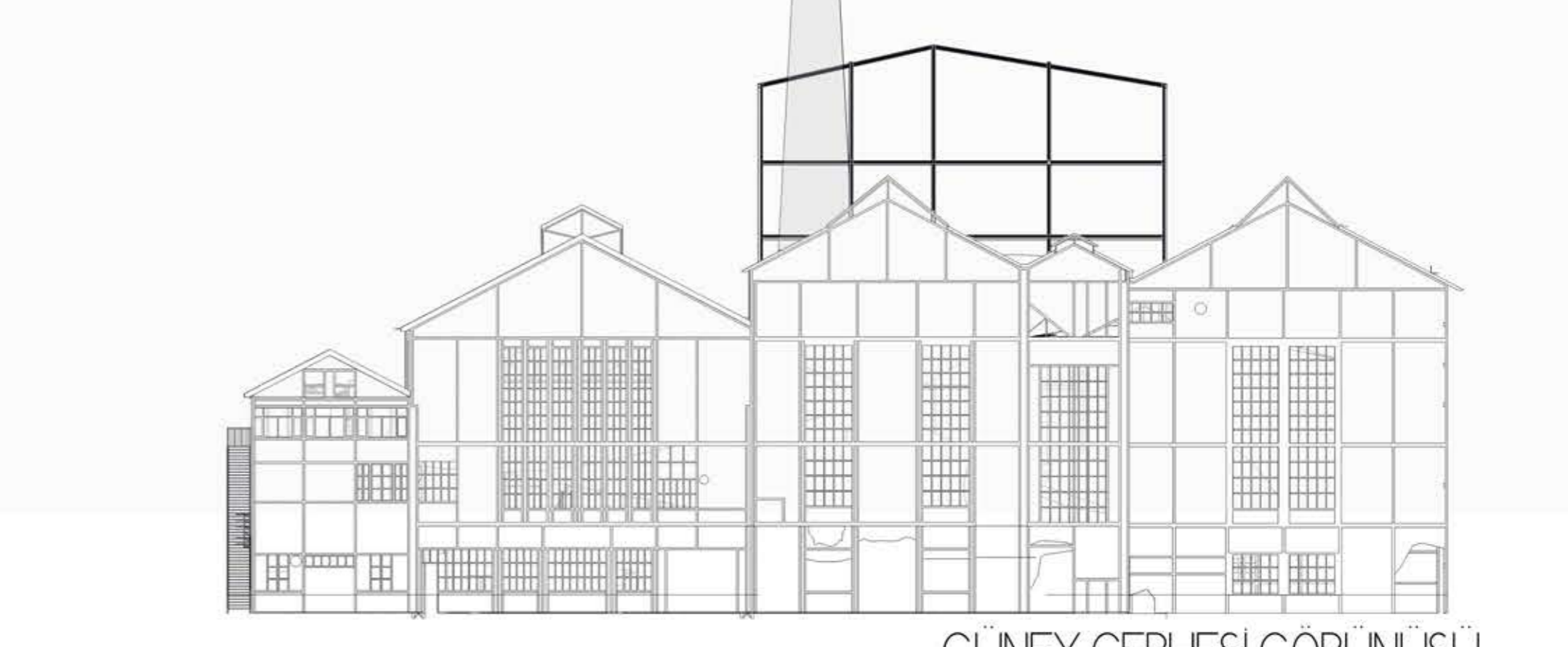
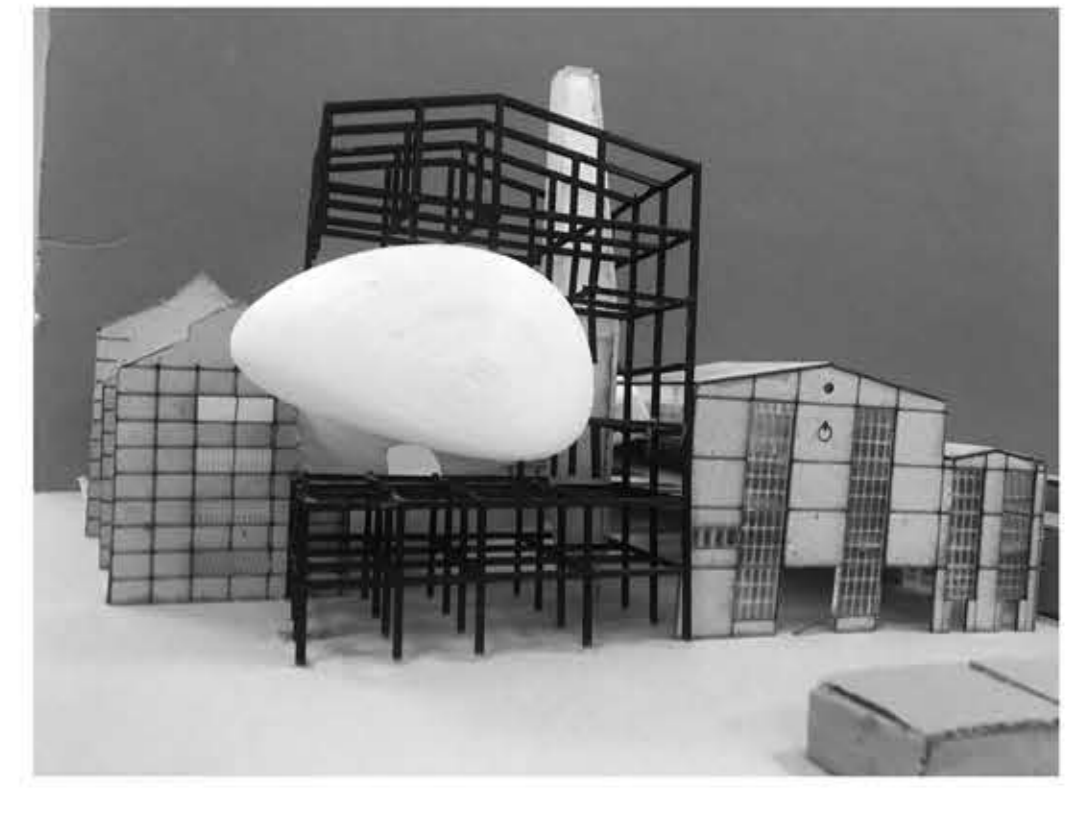
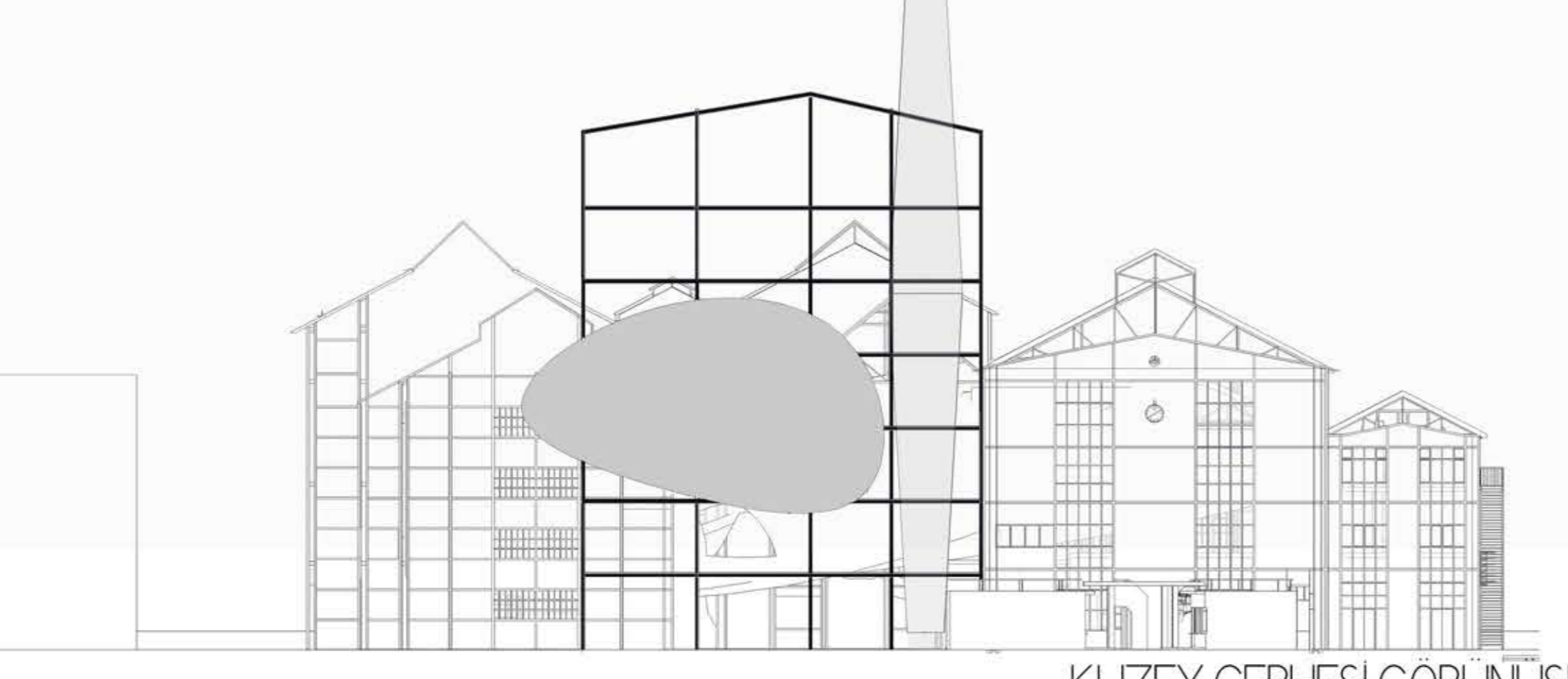
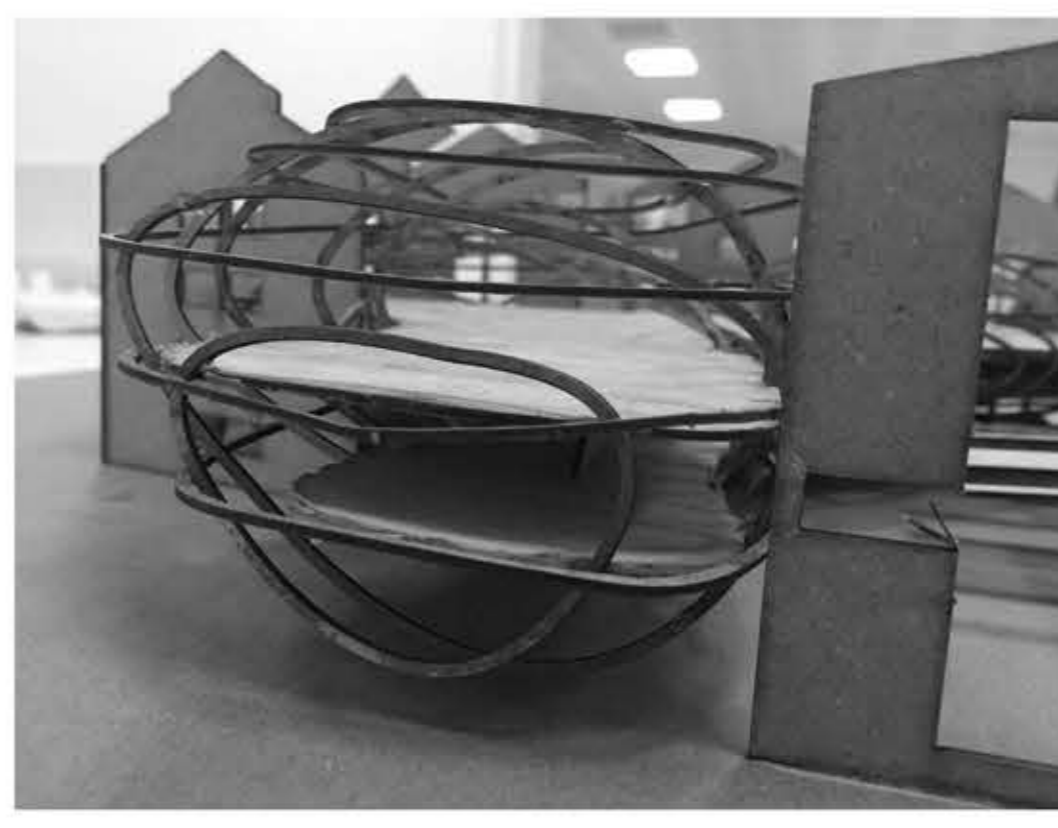
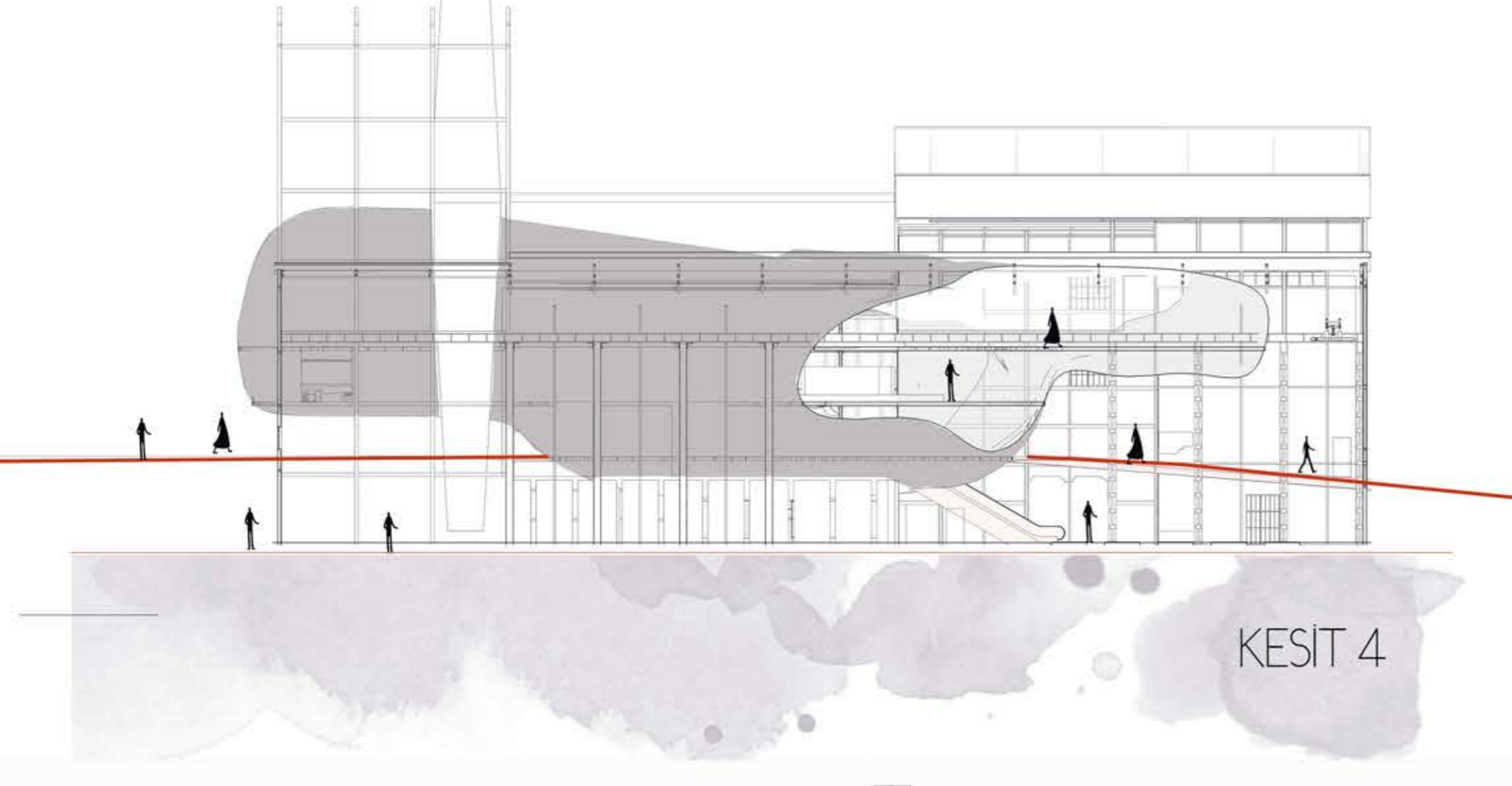
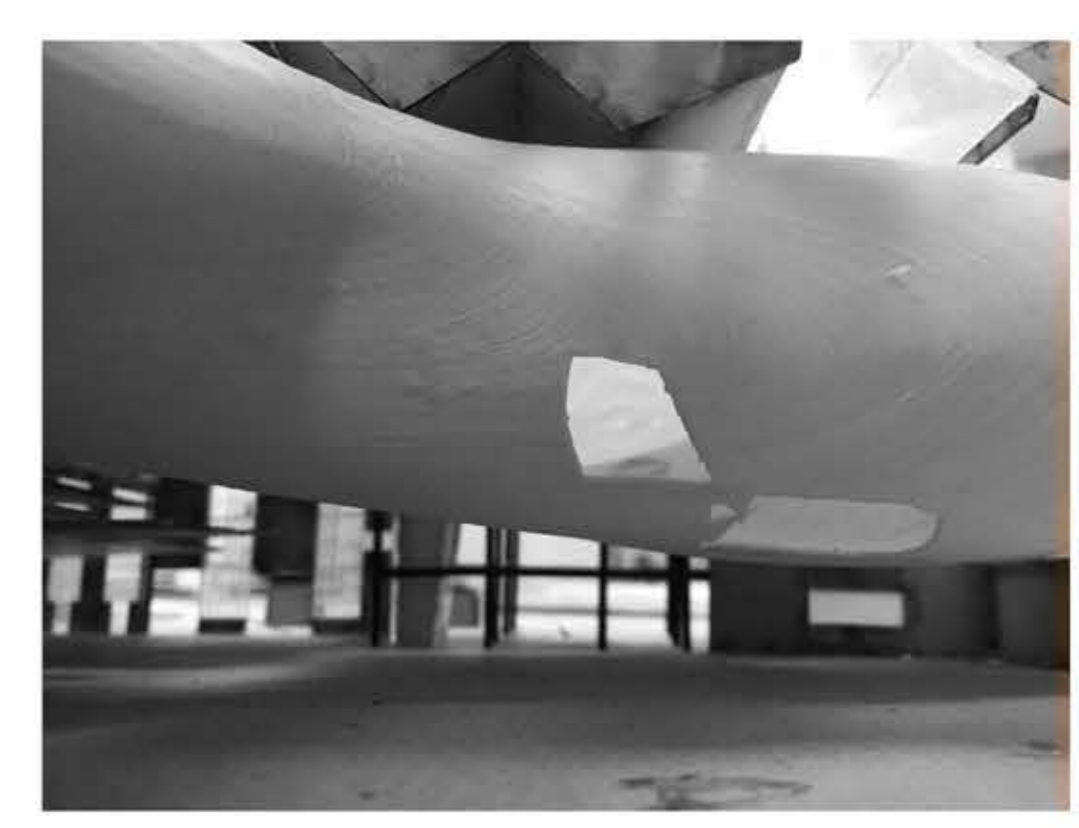
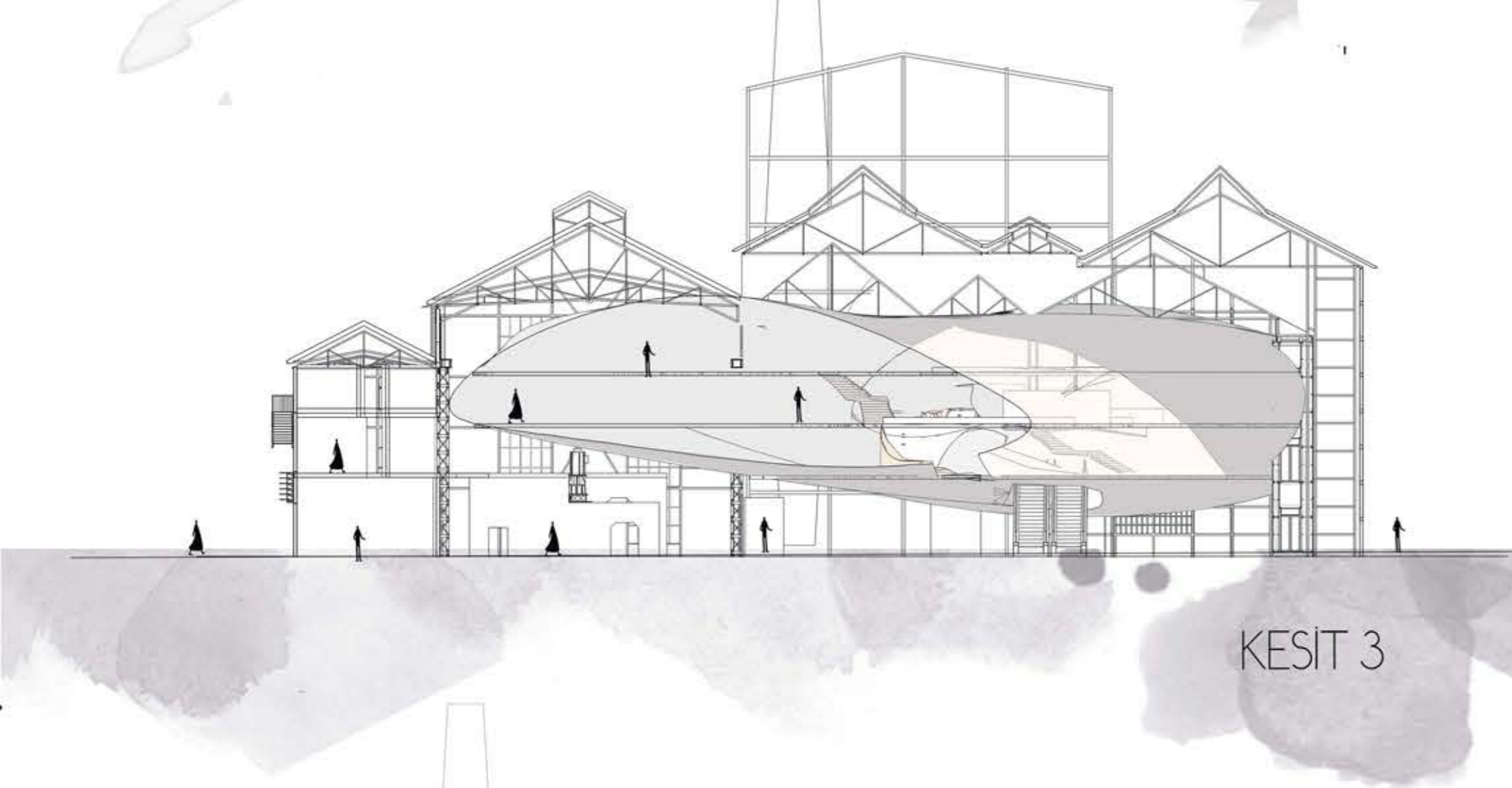
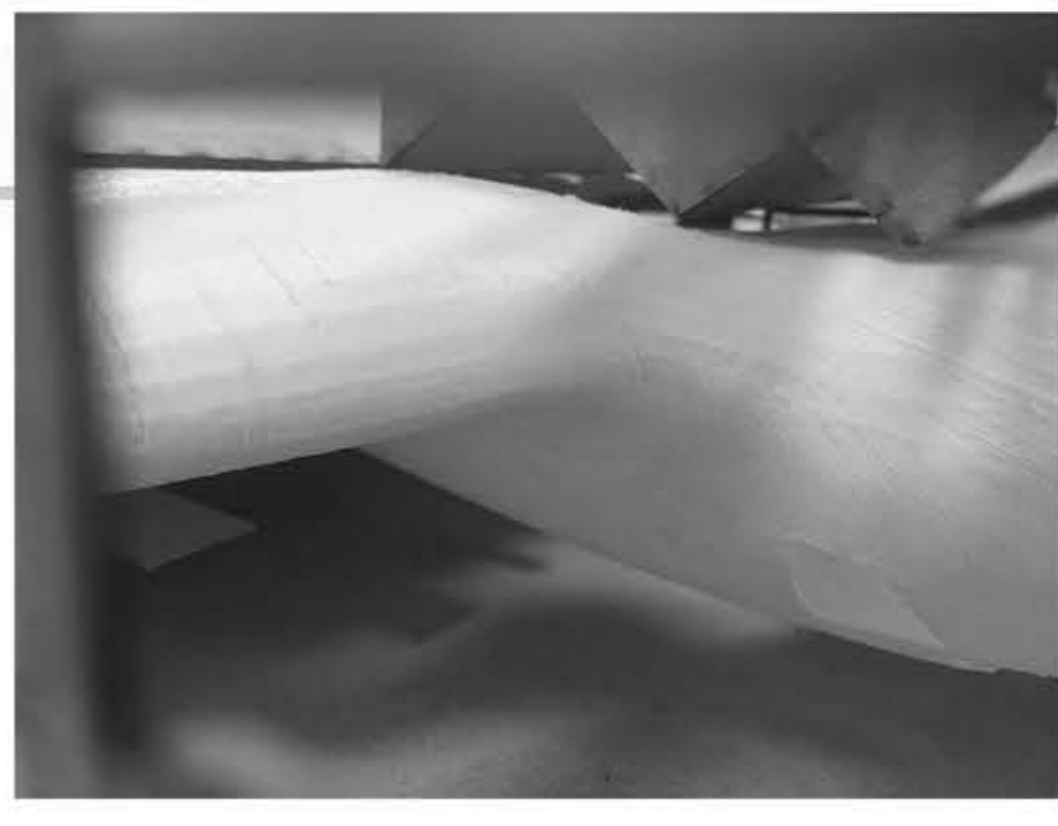
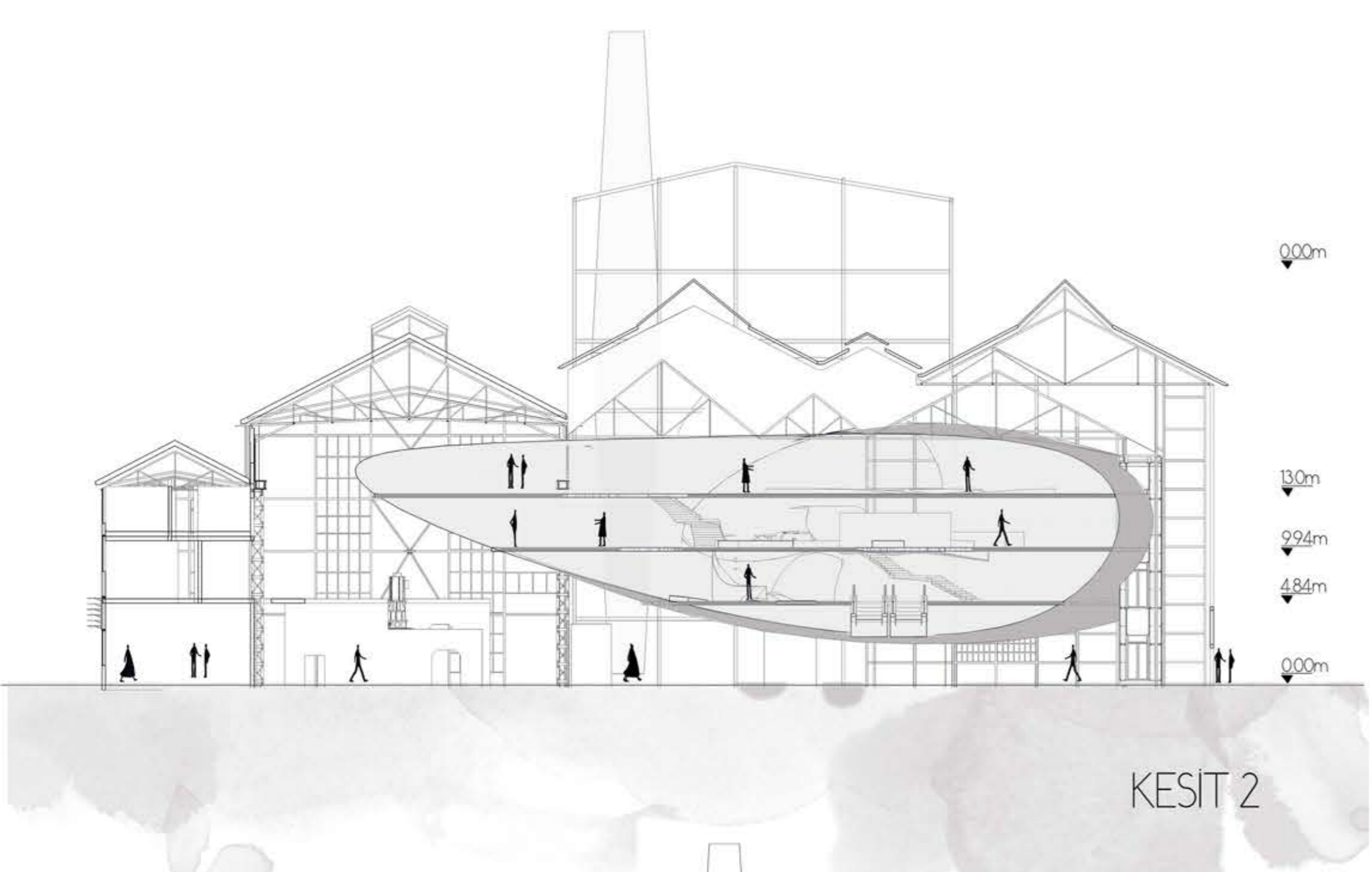
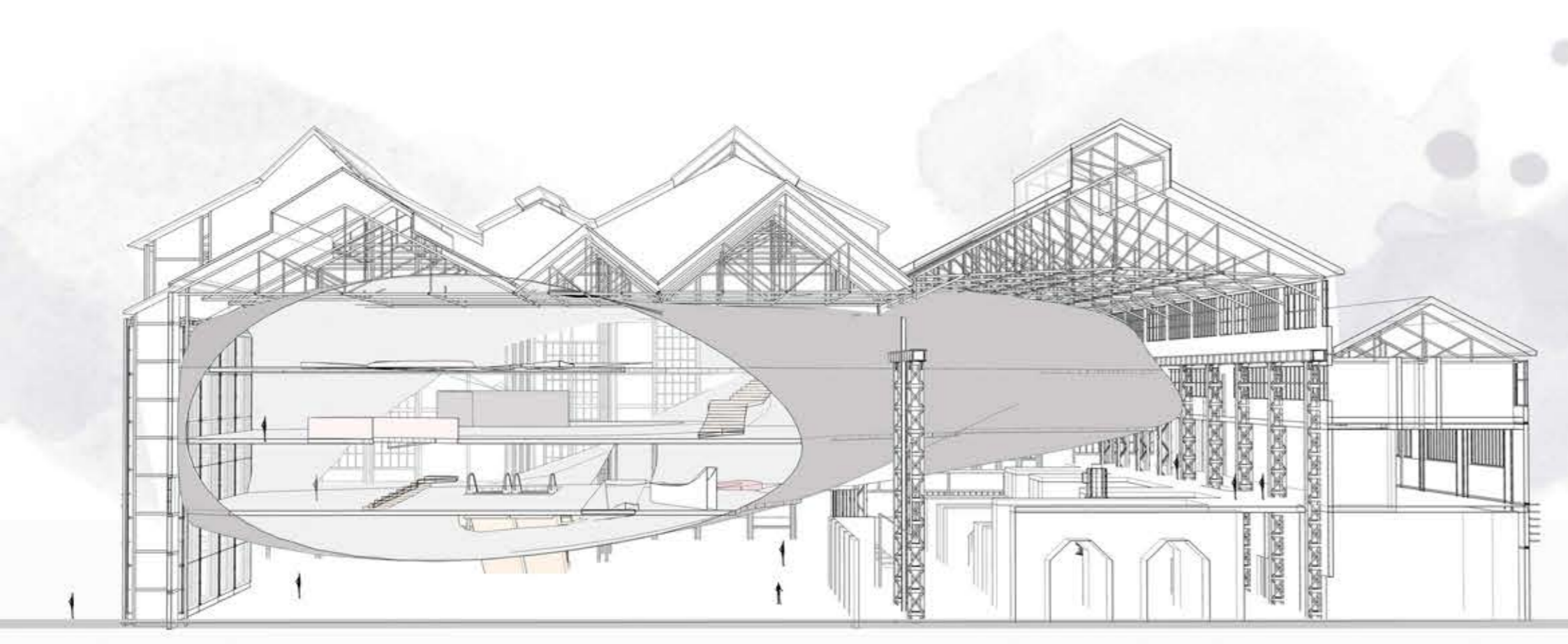
## YAPI - GRİŞ AKSLARI



## KAMUSAL BOŞLUK







KUZEY CEPHESİ GÖRÜNÜŞÜ

GÜNEY CEPHESİ GÖRÜNÜŞÜ